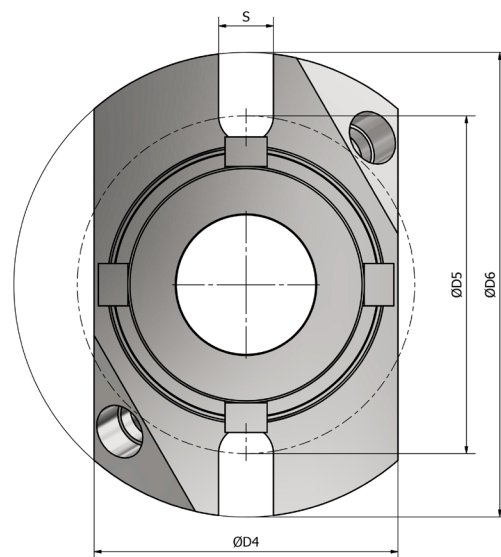
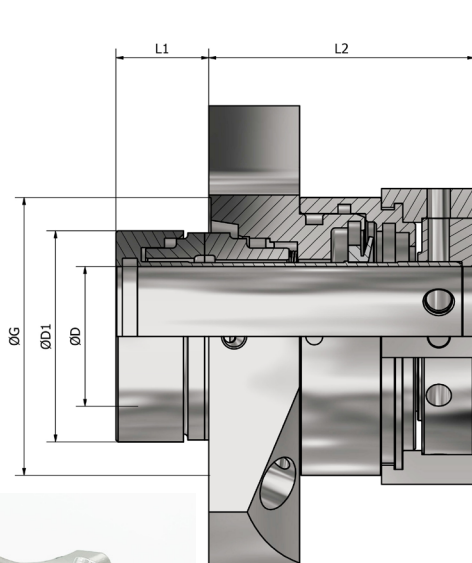


STYLE 677 SO

SINGLE CARTRIDGE SEAL MOUNTED, STATIONARY, BALANCED, WITH QUENCH AND LIP SEAL, WITH REDUCED GLAND

TENUTA SINGOLA STAZIONARIA A CARTUCCIA, BILANCIATA, CON FLANGIA RIDOTTA, QUENCH E TENUTA A LABBRO

SELLO DE CARTUCHO ESTACIONARIO ÚNICO, EQUILIBRADO, CON BRIDA REDUCIDA, CUANCH Y SELLO DE LABIO



Two types of flange available

TECHNICAL DATA / DATI TECNICI	
Metal parts <i>Parti metalliche</i>	G*
Elastomers <i>Elastomeri</i>	V - K - X1 - X*
Sliding faces <i>Facce di tenuta</i>	A - V2 - Q1 - Q2 - U2
Springs <i>Molle</i>	M5
Pressure <i>Pressione</i>	Vacuum/Vuoto 700 mm Hg ÷ 25 Kg/cm ^{3**}
Temp	Upon elastomers <i>Secondo elastomeri</i>
Speed <i>Velocità</i>	25 m/sec Upon sliding faces material <i>Secondo materiale delle facce</i>
Dimensions <i>Dimensioni</i>	25-100 mm/1-4" ***

*Other materials available upon request

*Altri materiali disponibili su richiesta

**Upon shaft diameter and speed

**Variabile in dipendenza al diametro e alla velocità

***Other sizes available up to 190mm

***Altre misure sono disponibili fino a 190mm

D	D	D4	D5	D6	S	G	D1	L1	L2
mm	inch	mm	mm	mm	mm	mm	mm	mm	mm
24,0	-	67,0	76,0	104,0	13,0	58,0	42,9	22,0	63,0
25,0	1000,0	67,0	76,0	104,0	13,0	58,0	42,9	22,0	63,0
28,0	1125,0	67,0	76,0	104,0	13,0	61,0	45,9	22,0	63,0
30,0	-	72,0	80,0	110,0	13,0	63,0	48,0	22,0	63,0
32,0	1250,0	72,0	80,0	110,0	13,0	65,5	50,0	22,0	63,0
33,0	-	72,0	80,0	110,0	13,0	65,5	50,0	22,0	63,0
35,0	1375,0	72,0	80,0	110,0	13,0	68,0	53,0	22,0	63,0
38,0	1500,0	81,0	89,0	128,0	13,0	72,0	56,0	22,0	63,0
40,0	-	81,0	89,0	128,0	13,0	73,0	58,0	22,0	63,0
42,0	-	86,0	100,0	142,0	14,0	75,5	60,8	22,0	63,0
43,0	1625,0	86,0	100,0	142,0	14,0	75,5	60,8	22,0	63,0
45,0	1750,0	86,0	100,0	142,0	14,0	77,8	63,0	22,0	63,0
48,0	1875,0	95,0	106,0	154,0	17,0	82,8	68,0	22,0	63,0
50,0	2000,0	95,0	106,0	154,0	17,0	82,8	68,0	22,0	63,0
53,0	2125,0	95,0	106,0	154,0	17,0	87,0	73,0	22,0	63,0
55,0	-	95,0	106,0	154,0	17,0	87,0	73,0	22,0	63,0
58,0	-	104,0	120,0	172,0	17,0	93,0	78,0	22,0	63,0
60,0	2250,0	104,0	120,0	172,0	17,0	93,0	78,0	22,0	63,0
-	2375,0	104,0	120,0	172,0	17,0	93,0	78,0	22,0	63,0
63,0	2500,0	124,0	128,5	180,0	17,0	101,5	87,4	24,0	63,0
65,0	-	124,0	128,5	180,0	17,0	101,5	87,4	24,0	63,0
68,0	2625,0	124,0	128,5	180,0	17,0	107,0	92,0	24,0	63,0
70,0	2750,0	124,0	128,5	180,0	17,0	107,0	92,0	24,0	63,0
-	2875,0	136,0	148,0	200,0	19,0	120,5	99,5	34,0	88,2
75,0	-	136,0	148,0	200,0	19,0	120,5	99,5	34,0	88,2
-	3000,0	136,0	148,0	200,0	19,0	130,0	104,5	35,0	79,6
80,0	3125,0	136,0	148,0	200,0	19,0	130,0	104,5	35,0	79,6
-	3250,0	150,0	160,0	220,0	20,0	132,8	109,5	38,0	75,7
85,0	3375,0	150,0	160,0	220,0	20,0	132,8	109,5	38,0	75,7
90,0	3500,0	150,0	160,0	220,0	20,0	140,8	114,5	38,0	76,0
-	3625,0	164,0	176,0	240,0	20,0	146,5	124,5	33,0	80,3
95,0	3750,0	164,0	176,0	240,0	20,0	146,5	124,5	33,0	80,3
100,0	3875,0	164,0	176,0	240,0	20,0	146,5	124,5	33,0	80,3

SEALTEK s.r.l.
www.sealtek.com
info@sealtek.com

All technical specifications contained in these technical data sheets are intended as guidelines. Sealtek s.r.l. must be informed about the precise conditions of application so that detailed information relating to specific cases can be provided.

06-2024