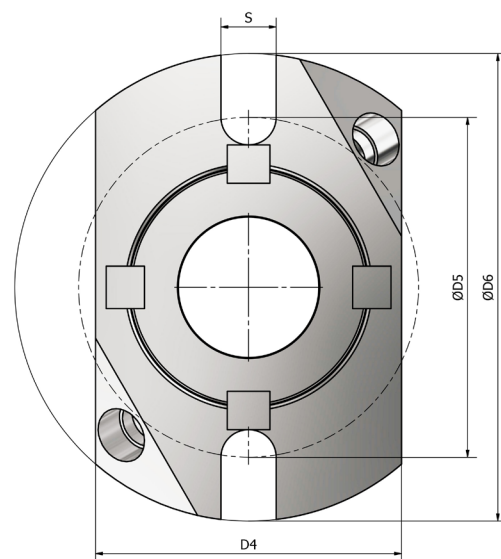
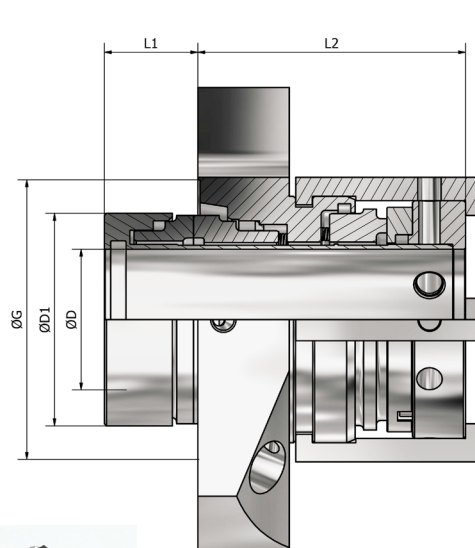


STYLE 677 RG

BALANCED CARTRIDGE SEAL WITH REDUCED GLAND

TENUTA DOPPIA STAZIONARIA PREMONTATA A CARTUCCIA, A DOPPIO BILANCIAMENTO, CON FLANGIA RIDOTTA

SELLO DE CARTUCHO EQUILIBRADO CON PRENSAESTOPAS REDUCIDO



Two types of flange available

D	D	D4	D5	D6	S	G	D1	L1	L2
mm	inch	mm	mm	mm	mm	mm	mm	mm	mm
24,0	-	67,0	76,0	104,0	13,0	58,0	42,9	22,0	63,0
25,0	1000,0	67,0	76,0	104,0	13,0	58,0	42,9	22,0	63,0
28,0	1125,0	67,0	76,0	104,0	13,0	61,0	45,9	22,0	63,0
30,0	-	72,0	80,0	110,0	13,0	63,0	48,0	22,0	63,0
32,0	1250,0	72,0	80,0	110,0	13,0	65,5	50,0	22,0	63,0
33,0	-	72,0	80,0	110,0	13,0	65,5	50,0	22,0	63,0
35,0	1375,0	72,0	80,0	110,0	13,0	68,0	53,0	22,0	63,0
38,0	1500,0	81,0	89,0	128,0	13,0	72,0	56,0	22,0	63,0
40,0	-	81,0	89,0	128,0	13,0	73,0	58,0	22,0	63,0
42,0	-	86,0	100,0	142,0	14,0	75,5	60,8	22,0	63,0
43,0	1625,0	86,0	100,0	142,0	14,0	75,5	60,8	22,0	63,0
45,0	1750,0	86,0	100,0	142,0	14,0	77,8	63,0	22,0	63,0
48,0	1875,0	95,0	106,0	154,0	17,0	82,8	68,0	22,0	63,0
50,0	2000,0	95,0	106,0	154,0	17,0	82,8	68,0	22,0	63,0
53,0	2125,0	95,0	106,0	154,0	17,0	87,0	73,0	22,0	63,0
55,0	-	95,0	106,0	154,0	17,0	87,0	73,0	22,0	63,0
58,0	-	104,0	120,0	172,0	17,0	93,0	78,0	22,0	63,0
60,0	2250,0	104,0	120,0	172,0	17,0	93,0	78,0	22,0	63,0
-	2375,0	104,0	120,0	172,0	17,0	93,0	78,0	22,0	63,0
63,0	2500,0	124,0	128,5	180,0	17,0	101,5	87,4	24,0	63,0
65,0	-	124,0	128,5	180,0	17,0	101,5	87,4	24,0	63,0
68,0	2625,0	124,0	128,5	180,0	17,0	107,0	92,0	24,0	63,0
70,0	2750,0	124,0	128,5	180,0	17,0	107,0	92,0	24,0	63,0
-	2875,0	136,0	148,0	200,0	19,0	120,5	99,5	34,0	88,2
75,0	-	136,0	148,0	200,0	19,0	120,5	99,5	34,0	88,2
-	3000,0	136,0	148,0	200,0	19,0	130,0	104,5	35,0	79,6
80,0	3125,0	136,0	148,0	200,0	19,0	130,0	104,5	35,0	79,6
-	3250,0	150,0	160,0	220,0	20,0	132,8	109,5	38,0	75,7
85,0	3375,0	150,0	160,0	220,0	20,0	132,8	109,5	38,0	75,7
90,0	3500,0	150,0	160,0	220,0	20,0	140,8	114,5	38,0	76,0
-	3625,0	164,0	176,0	240,0	20,0	146,5	124,5	33,0	80,3
95,0	3750,0	164,0	176,0	240,0	20,0	146,5	124,5	33,0	80,3
100,0	3875,0	164,0	176,0	240,0	20,0	146,5	124,5	33,0	80,3

TECHNICAL DATA / DATI TECNICI

Metal parts Parti metalliche	G*
Elastomers Elastomeri	V - K - X1 - X*
Sliding faces Facce di tenuta	A - V2 - Q1 - Q2 - U2
Springs Molle	M5
Pressure Pressione	Vacuum/Vuoto 700 mm Hg ÷ 25 Kg/cm ^{3**}
Temp	Upon elastomers Secondo elastomeri
Speed Velocità	25 m/sec Upon sliding faces material Secondo materiale delle facce
Dimensions Dimensioni	25-100 mm/1-4" ***

*Other materials available upon request
*Altri materiali disponibili su richiesta

**Upon shaft diameter and speed
**Variabile in dipendenza al diametro e alla velocità

***Other sizes available up to 190mm
***Altre misure sono disponibili fino a 190mm

SEALTEK s.r.l.
www.sealtek.com
info@sealtek.com

All technical specifications contained in these technical data sheets are intended as guidelines. Sealtek s.r.l. must be informed about the precise conditions of application so that detailed information relating to specific cases can be provided.

06-2024